

1000 LPM Fuel Cleaning Unit

The 1000 LPM Cleaning Unit is designed to effectively remove water and solid contaminants to keep your fuel source clean and appliance performing at its best.

Why is this important?

All engines rely on having a clean source of fuel to perform correctly. Reliability with limited down time is extremely important. Whether it's business or pleasure the total cost of ownership of your appliance can be reduced through prevention.

Modern diesel engines have high pressure common rail fuel injection systems with fuel injectors that have ultrafine tolerances, meaning that your fuel quality has never been more crucial. These components are expensive items, and when you factor in the cost to remove and replace with down time, can be very costly.

Prevention

If your fuel is not health checked and managed correctly, filters will typically become blocked. High pressure fuel injectors and pumps will not perform properly and lead to premature failure causing down time of your appliance.



Features

Powerful pump

With high flow rates up to 1000 litres per min

Safety

Integral bund, two emergency stops, bund shutdown, drain tank overflow shutdown, high pressure shutdown

Integral sampling points

Integral drain points

Portable

Detachable certified lifting frame, base frame with integral forklift pockets, finished in three coat offshore specification black gloss finish

Efficiency

High volume dirt holding capacity to deliver ISO cleanliness codes of 18/16/13 or better

POWER SOLUTIONS FOR A CHANGING WORLD

Tel +44 (0)1493 441383 Email rentals@priorpower.com Web www.priorrentalsolutions.com

Prior Rental Solutions is a trading name of Prior Power Solutions Ltd.

1000 LPM Fuel Cleaning Unit

Specification

Pump

11 kw self -priming centrifugal pump.

Lifting frame

Detachable certified lifting frame, with integral forklift pockets, finished in offshore specification black gloss finish.

Ports

Inlet, outlet, transfer 4" flange connections, sample point & drain points to tank.

Safety features

- 2 x E-Stops, bund shut down, drain tank overflow high pressure shutdown set at 3.5 bar.
- Filter 1 blocked shutdown.
- Filter 2 blocked shutdown.

Pressure rating

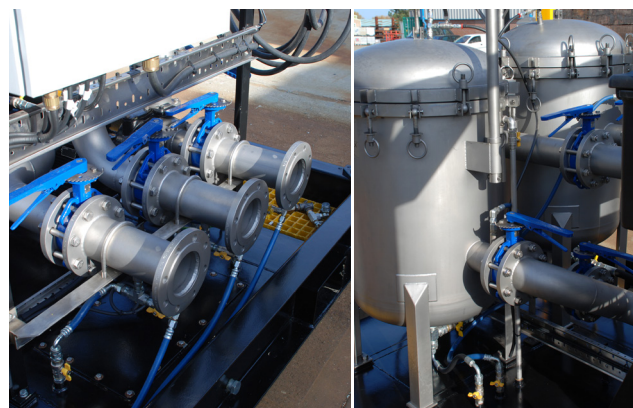
10 bar rated system, 3.5 bar shut-off system.

Water removal

Naturally coalescing – removes free water from fuel and oils, achieves 100ppm or better using Filtersorb2 inserts.

Dimensions

Length	2660 mm
Width	2050 mm
Height (incl frame)	2020 mm
Height (excl frame)	1800 mm



Power supply

415v 3 phase.

Flow rate

1000 litres per minute @ 3.2 bar, inverter driven with variable flow control in 250 litre per minute increments.

Pipework

4" stainless steel pipework welded throughout with integral continuous running capability (divert flow whilst running – filter 1&2, filter 1 only, filter 2 only, divert, bypass pump).

Filter housing system

Two '4R' fuel filter housings, drain ports on base connected to integral drain tank and into pump for unit drain down, with bleed points on lids.

Filter efficiency (1Um)

High volume dirt holding capacity to deliver ISO cleanliness codes of 18/16/13 or better.

Main control panel

Mild steel cabinet with certified wiring and connections and full earth bonding with point on the main skid base.

Weight

Tare	750 kg
Gross	2000 kg

POWER SOLUTIONS FOR A CHANGING WORLD

Tel +44 (0)1493 441383 Email rentals@priorpower.com Web www.priorrentalsolutions.com

Prior Rental Solutions is a trading name of Prior Power Solutions Ltd.